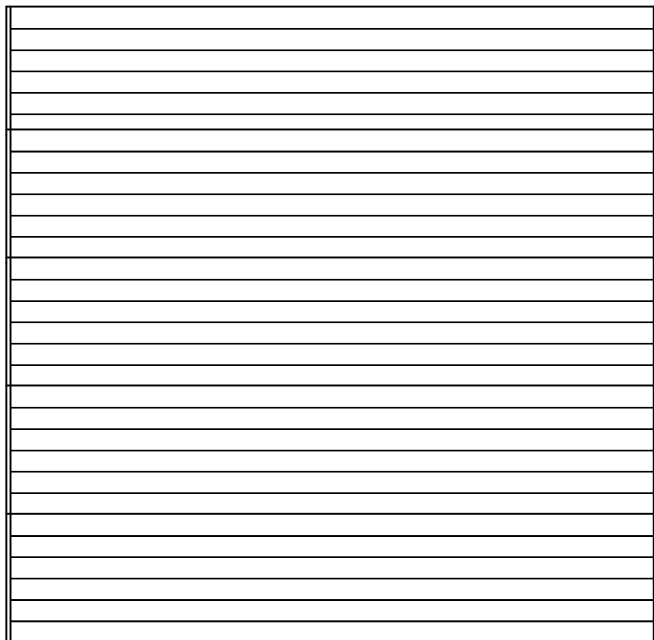
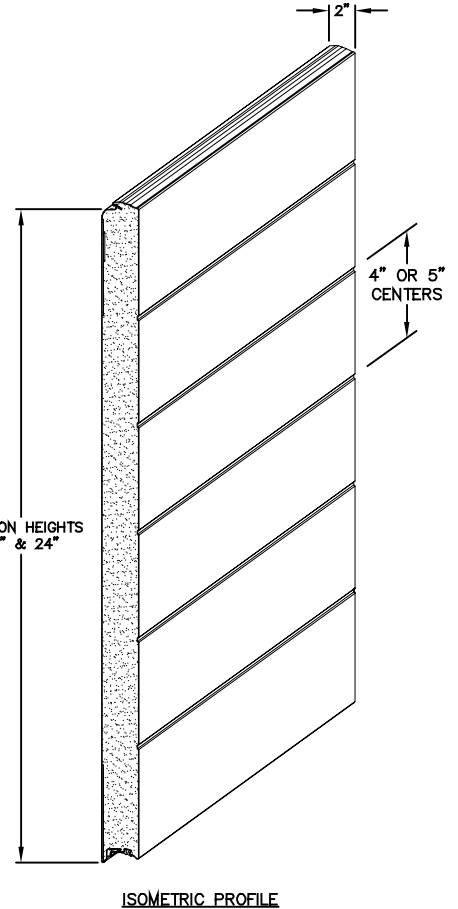
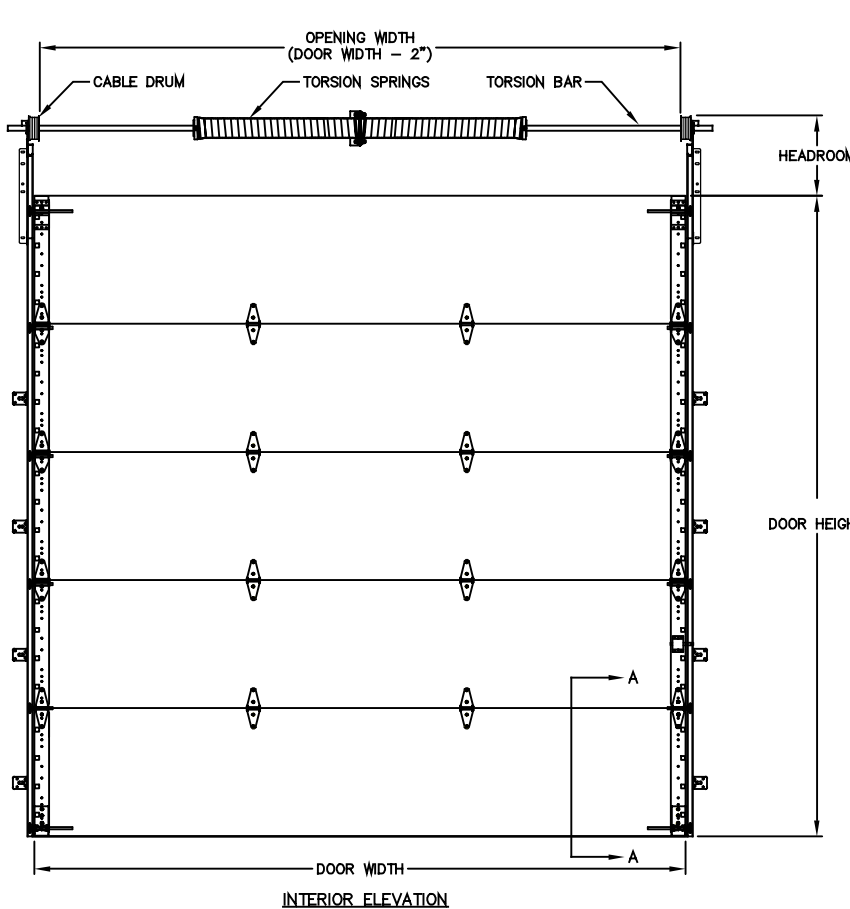
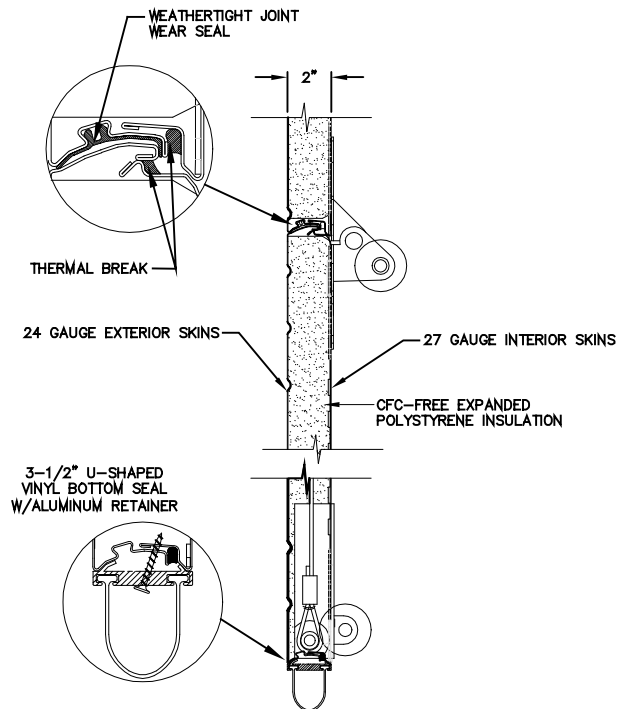


# MODEL 1000



EXTERIOR ELEVATION



SECTION A-A

# 2" Commercial EPS Model 1000

## Technical Specifications

### Specifications

#### PART 1 GENERAL

##### 1.01 Section

Sectional Doors are to be Model 1000 as manufactured by Amarr Garage Doors. Operation to be manual pushup. Mounting to be interior face mounted on a prepared surface.

##### 1.02 Quality Assurance

Doors shall be insulated steel sectional overhead type. Each door includes sections, brackets, tracks, counterbalance mechanisms and hardware to suit the opening and headroom available.

##### 1.03 Related Work

Opening preparation, electrical wiring, miscellaneous or structural steel, access panels, finish or field painting are in the scope of the work of other sections.

#### PART 2 PRODUCT

##### 2.01 Door Sections

Steel sections shall be 2" thick sandwich construction consisting of exterior and interior steel skins laminated to an expanded polystyrene (EPS) foam core with a urethane adhesive. Both steel skins to be separated by PRO-bond, a continuous silicone seal that forms a thermal break. Steel skins shall be roll formed, hot-dipped galvanized (per ASTM A-525, A-526), Zinc phosphate pre-treatment with primer and baked-on polyester top coat. Door sections shall be constructed of 24 gauge (.022 min.) exterior and 27 gauge (.016" min.) interior skins. Both skins to have stucco embossed texture. The exterior steel skin has 0.41" minor ribs on 4" or 5" centers. Door sections to have 20 gauge (.034" min.) galvanized endstiles, engineered for easy hardware attachment through prepunched holes. 18 gauge (.045" min.) galvanized, primed steel support plates (2 5/8" x 3 1/2") (66.7mm x 111.1mm) are located under each hinge location, prepunched for hinge attachment. Section joint to form weathertight tongue and groove joint. Polypropylene Wear-Seal attached between each tongue and groove joint reduces noise, diminishes normal wear and tear on sections and forms a second thermal break. Galvanized steel step plate/lift handle provided on bottom section. Standard maximum door size is 24'2" (7.37m) wide x 16'0" (4.88m) high.

##### 2.02 Finish

The door exterior and interior is prepainted steel consisting of a phosphate coating over hot-dipped galvanization applied to the base metal. A .2 mil baked-on prime coat is applied and then a .8 mil baked-on polyester top-coat is applied for ultimate rust protection. The inside of the exterior and interior skins is finished with a .2 mil primer before installation of the internal EPS insulation. Sections are available in white exterior finish only.

##### 2.03 Energy Values

Section : U-value 0.12 R-value 8.34

##### 2.04 Insulation

2" (50.8mm) thick CFC-free expanded polystyrene (EPS) laminated to the inside of both interior and exterior steel skins with a special urethane adhesive.

##### 2.05 Weather-stripping

3-1/2" (88.9mm) U-shaped vinyl bottom seal in a full-length .050" (1.27mm) aluminum retainer is attached to the bottom section.

##### 2.06 Track

Galvanized steel track shall be 2" (50.8mm) or 3" (76.2mm) as required. Reverse angle mounting is standard for steel jambs. Bracket mounting is standard for wood jambs. Vertical track to be minimum 19 gauge galvanized steel, incline through the use of adjustable brackets to assure weathertight closure at the jambs. Horizontal tracks to be minimum 16

gauge galvanized steel, reinforced with 13 gauge galvanized steel angles as required by door size and weight.

##### 2.07 Hardware

Hardware includes minimum 14 gauge galvanized steel hinges and 13 gauge galvanized steel track brackets. All rollers to have 10-ball bearings with casehardened inner and outer races. Sliding end stile locking device with spring-loaded bolt for inside operation only. Doors 16'0" and wider will have double end hinges and stiles and long stem rollers. Galvanized struts (truss bars) supplied on all doors 12'3" and wider to prevent deflection no more than 1/120 of the spanned width when in the open position.

##### 2.08 Spring Counterbalance

Torsion springs for door counter-balance are mounted on a continuous cross header shaft. Springs are oil tempered, helical wound and custom computed for each door. Springs to provide 10,000 cycles minimum. Cable drums are die cast aluminum. Galvanized lift cable will provide minimum safety factor of five to one. Springs to comply with ANSI/DASMA 102-1996.

##### 2.09 Lock

Interior sliding end stile lock with hole to receive padlock is standard.

##### 2.10 Warranty

The paint finish carries a 10 year warranty against film integrity (peeling) and against color performance (fading) and chalking.. The door has a 1year warranty on material, workmanship and hardware.

##### Options

##### 2.11 Window Lites

Framed lites 24" x 4" (609.6mm x 101.6mm) or 24" x 12" 609.6mm x 304.8mm) can be installed in any intermediate section of a ribbed door. Glazing with Plexiglas is standard in 24" x 4" lites; SSB is standard in 24" x 12" lites. Insulated glass is available upon request. Frame is screw together construction of PVC.

##### 2.12 Wind Load

Contact your Amarr Door Center for specific wind load applications.

##### 2.13 High Cycle Springing

25,000; 50,000 or 100,000 cycle torsion springs available.

##### 2.14 Locks

Outside keyed end stile lock.

A 5-pin cylinder lock with interior lock bar and outside key is available.

##### 2.15 Weather-stripping

Perimeter seal for header and jambs is optional.

##### 2.16 Track

Hi-lift, vertical, low headroom and follow-the-roofline track is available.

##### 2.17 Exhaust Port

To allow the release of fumes, exhaust ports can be installed in bottom sections. Tubes by others must be used from vehicles.

##### 2.18 Electric Operation

A full line of commercial operators and accessories is available through any Amarr Door Center. Contact your Amarr Door Center for product information.

#### Part 3 EXECUTION

##### 3.01 Installation

Installation to be by qualified dealer in accordance with Amarr's installation instructions and local building codes.